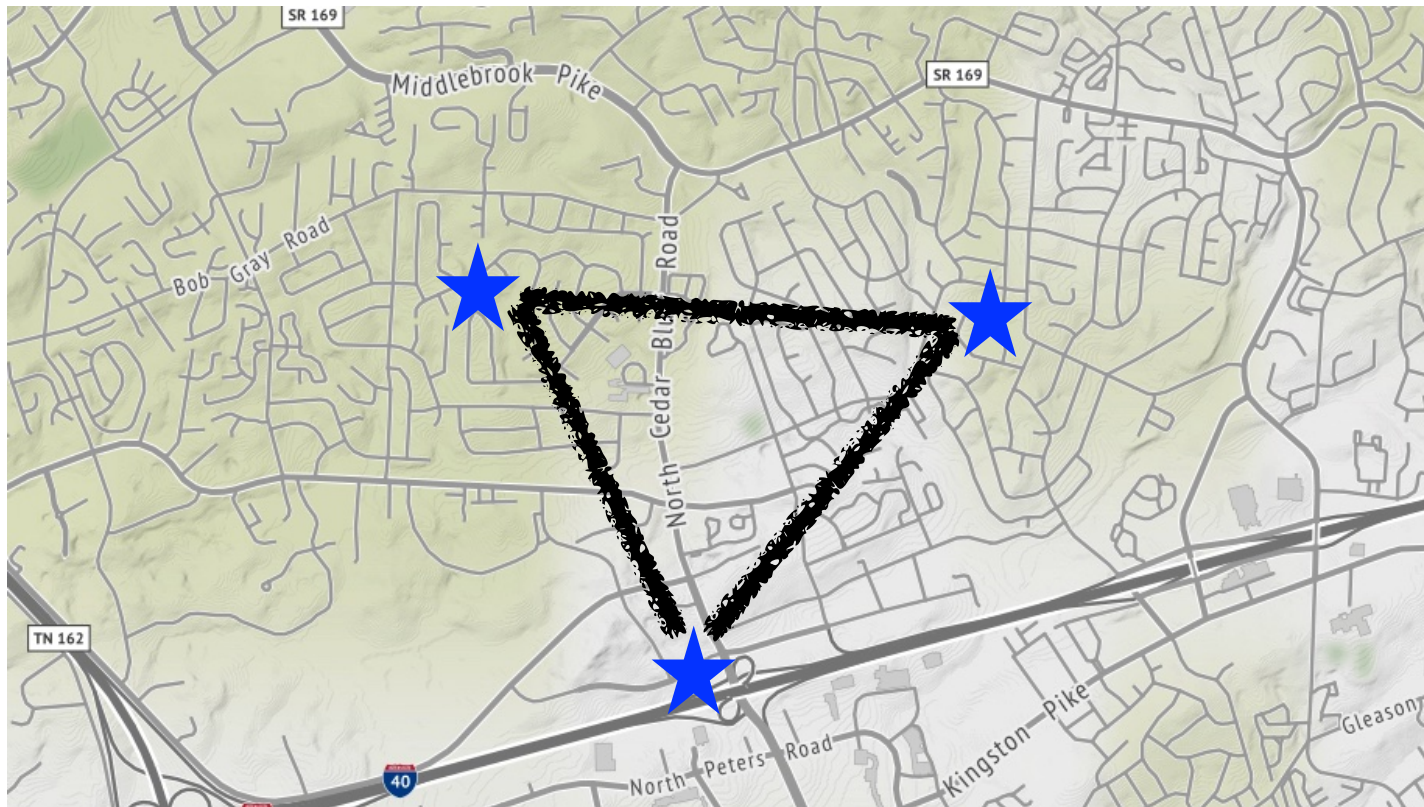
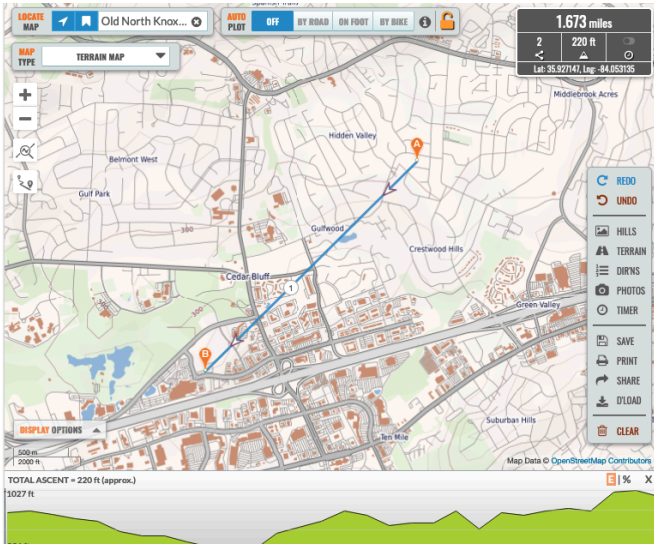


Node ID	Elevation - ft
KA1TOM - <i>Dorset</i>	980 + 60 = 1040
W3VN - <i>Bob Kirby</i>	1160 + 40 = 1200
KN4CVN - <i>Executive Park (Summit Medical)</i>	1100 + 30 = 1130

*Slightly hilly terrain, relatively urbanized, 2.4g & 5.8g interference is likely. 2.4g may be better for penetrating the trees due to the low elevation of the nodes. Cell tower present at Summit site.



AREDN OG



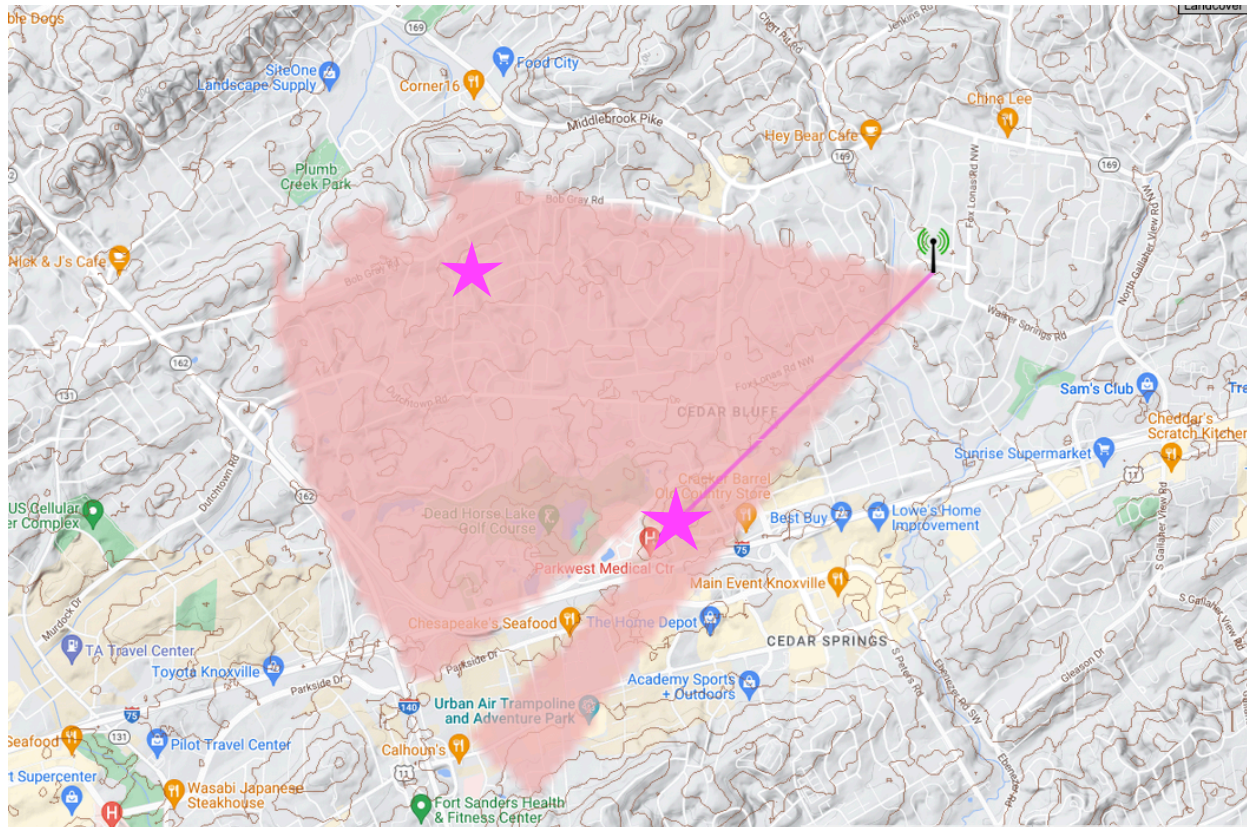
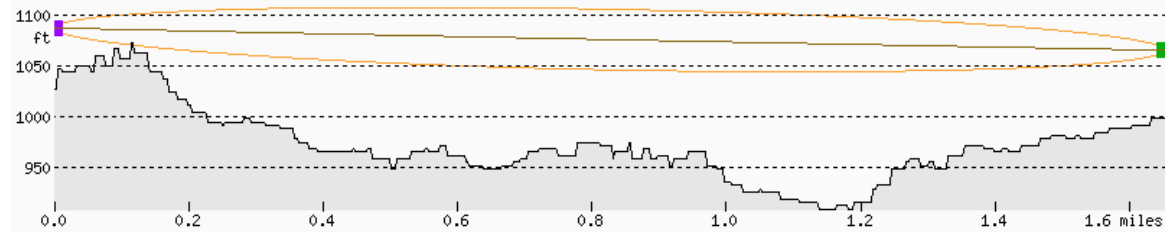
Mesh Islands

#1

KA1TOM – Parkwest – W3VN

KA1TOM-Dorset – elevation ~1000' 65' tower, tp-link CPE210, range set to 3 miles w/65 degree beam width. 27 dbm Tx power- [500 mW], 9 dbi gain antenna, @250 degrees.

The Summit building at Parkwest AND W3VN should have an adequate signal. If not, there are several other options, (ie. Dish, CPE510, Rocket M2/M5 sectors, etc.).



KA1TOM—Dorset
@250 degrees —
Parkwest 1.6 miles

